



world
class
winches

Hydraulic Planetary Gear Winches

H50PX

Pneumatic freespool clutch Type No 73.07-045

5 TONNES WINCH WITH ROPE PAY-ON DEVICE



Pulling force

- bottom rope layer	5.0 tonnes	11 200 Lbs
- top rope layer	3.0 tonnes	6 700 Lbs

Rope speed

- bottom rope layer	12.0 m/min	39 ft/min
- top rope layer	20.0 m/min	65 ft/min

Rope speed in high auto 2-speed

- bottom rope layer	n/a	n/a
- top rope layer	n/a	n/a

Max oil pressure

200 bar 2900 psi

Max oil flow

60 l/min 16 gal/min

Drum diameter

126 mm 4.96 inch

Rope diameter

12 mm 0.47 inch

(Acc. to DIN 14584, MBL \geq 98 kN)

Rope length

40 m 131 ft

Numbers of layers

5 5

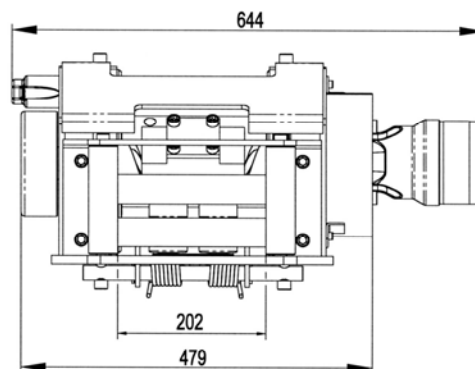
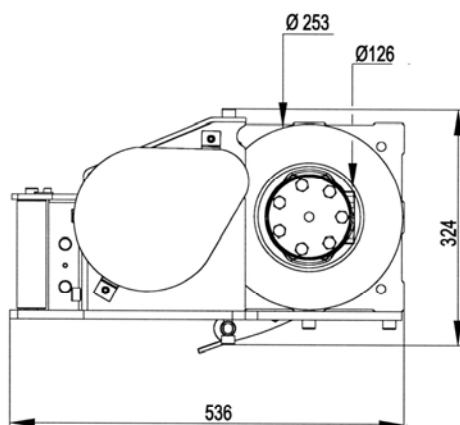
Winch weight

115 kg 258 Lbs

Rope weight

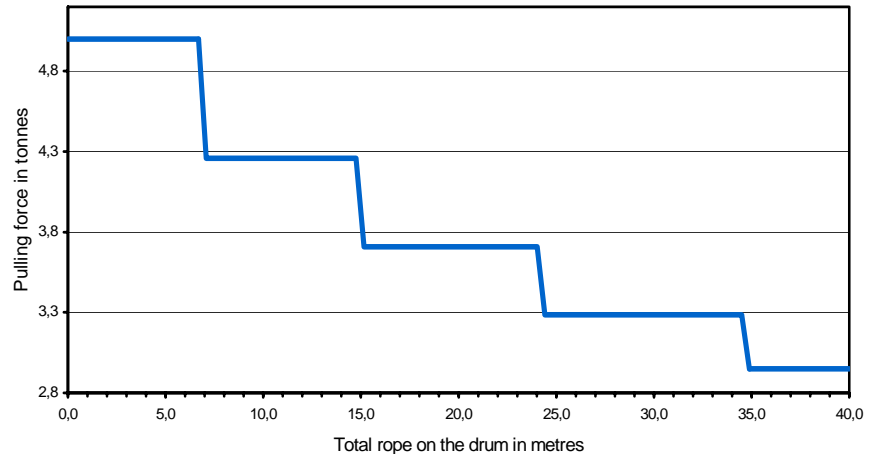
25 kg 56 Lbs

Dimensional drawing (dimensions in mm)



Pulling force over the rope length

	Pulling force (tonnes)	Rope speed (m/min)	Total Rope on the drum (m)
1st	5,0	12,0	6,9
2nd	4,3	14,0	15,0
3rd	3,7	16,0	24,2
4th	3,3	18,0	34,7
5th	3,0	20,0	46,4

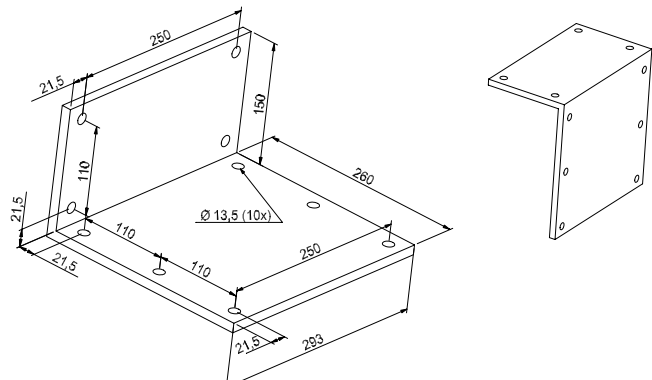


Mounting instructions

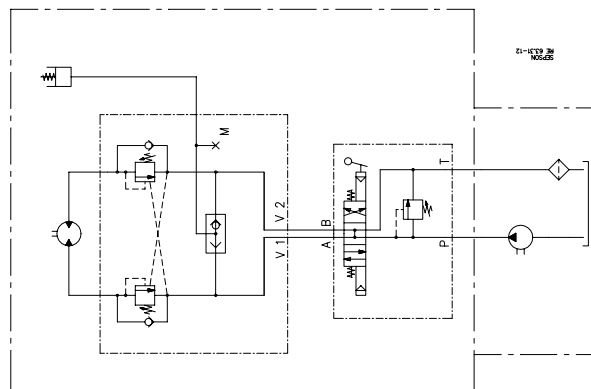
It is always best to seek advice on mounting the winch from SEPSON and the vehicle manufacturer as early as possible before the delivery of the winch.

The winch must be fitted to a mounting plate with 10 bolts M12 (hot galvanized) minimum quality 8.8.

Tightening torque 124 Nm (12.4 kpm) when oiled.



Hydraulic installation



Declaration of Conformity

According to the Machine Directive 98/37/EC, Annex IIA

Sepson AB, P.O. Box 172, SE-780 50 Vansbro, Sweden declare under our sole responsibility that:

The winch type 73.07 with serial numbers 846-1786

- are manufactured according to the Machine Directive 98/37/EC
- are manufactured according to following harmonized standards – EN 292-1 and 2

Vansbro December 9, 2005. **Sepson AB** Ulf Jons Designer